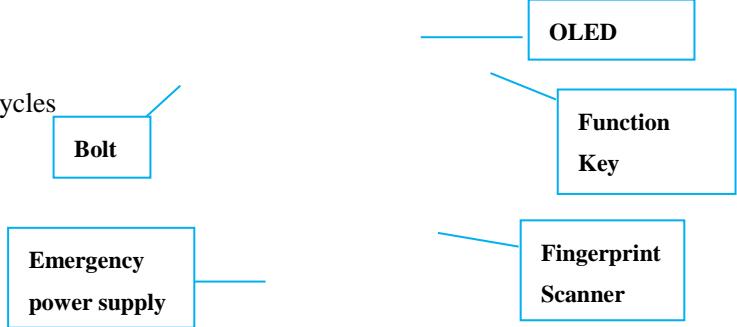


Fingerprint Lock Product Guide

Item No.: PL727

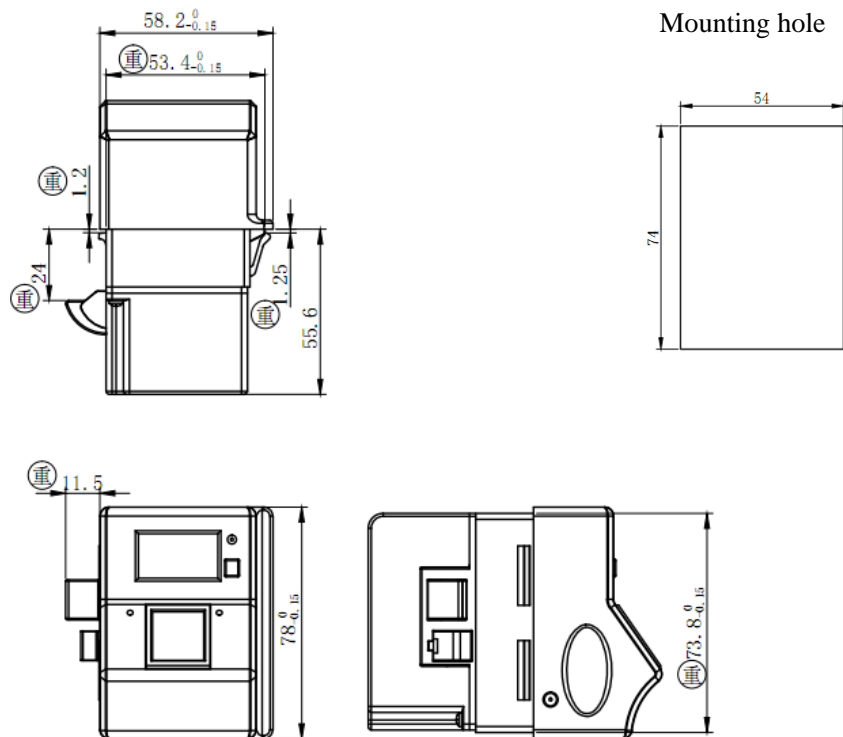
Technical Data

Dimensions	73.8X54X55.6mm
Material	ABS
Input Voltage	DC4.5V
Power Supply	3 X AA alkaline batteries
	Service life 50,000 locking cycles
Static Power	≤100uA
Dynamic Power	≤170mA
Lower voltage alarm	
Use condition	Temperature: -15℃~65℃ ; Humidity: 5%~95%
Door thickness:	0.6-1.2mm(standard) 1.2-18mm (optional)



Features

- Easy and quick installation and operation
- Highly sensitive fingerprint optical sensor, 0.5s reaction time
- LED in 2 colours for lock status (green ,red)
- Application for metal ,wooden and plastic doors



OLED Screen

Function key: Press this key to wake up/activate the lock

Fingerprint scanner: Used to capture or match fingerprints. When the fingerprint scanner is active, it will turn blue in colour.

Emergency power supply: if the battery power runs out, the emergency power connector can be used to provide access

The Fingerprint lock is classified into three user levels:

- 1) Main-admin's FP: refer to users who have access to all system functions and modify all settings
- 2) Admin's FP: refer to user who have access to unlocking or delete the user FP
- 3) User's FP: only have access to the fingerprint matching and unlocking functions

Operating Instructions

Register a Main-Admin FP:

- A. Press the function key ,the OLED display show" Register a Main-Admin's FP"
- B. Place your finger onto the scanner, then display shows "repeat"
- C. Repeat the above operation, display shows "successful"

Register an Admin's FP:

- D. When display show" Register a Admin's FP"
- E. Place your finger onto the scanner, then display shows "repeat"
- F. Repeat the above operation, display shows "successful"

Note: One lock is available for 2 Admin's FP

Register a user's FP:

- G. Press the function key ,the OLED display shows" Register a user's FP"
- H. Place your finger onto the scanner, then display shows "repeat"
- I. Repeat the above operation, display shows "successful"

Delete the 1st admin's FP

- A. Press function key 3 seconds, verify the Main admin's FP
- B. Select the program "delete the 1st admin's FP" by function key
- C. Press function key 3 seconds again, display shows "successful"

Delete the 2nd admin's FP

- D. Press function key 3 seconds, verify the Main admin's FP
- E. Select the program "delete the 2nd admin's FP " by function key
- F. Press function key 3 seconds again, display shows "successful"

Delete the user's FP

- G. Press function key 3 seconds, verify the Main admin's FP
- H. Select the program "delete the user's FP" by function key
- I. Press function key 3 seconds again, display shows "successful"

Select the most appropriate function for the application: A) Private Use or B) Public Use

A) Private Use

Note: this is the default function and is already pre-programmed in new lock. This is the most common function and is used where the same fingerprint will be repeatedly used.

Press function key and reset pin at the same time ,select Private mode upon display prompt

B) Public Use

This function is used for short term, multi occupancy application. The fingerprint is only used one time

Press function key and reset pin at the same time ,select Public mode upon display prompt

Note: the red light will flash every 2 seconds ,

Reset lock

A. Press function key to wake up

B. Remove the battery cover, insert the pin to the reset hole ,then press the pin 3 seconds,until display show”Init Complete” reset successfully

Additional Function

1. Emergency Unlock Function

--Unlock from emergency power if lock without power or low power

--Unlock by main-admin’s FP or admin’s FP

2. Low voltage alarm Function

--The lock will alarm if the voltage lower ,the red light flash and the display will show **“please change battery”**

3. The setting will be exited automatically when no action is carried out,and lock in sleep mode

Changing the Battery

1. Remove the screw in the battery cover
2. Take off the battery cover
3. Take out the batteries
4. Put in the new batteries and screw cover plate in place